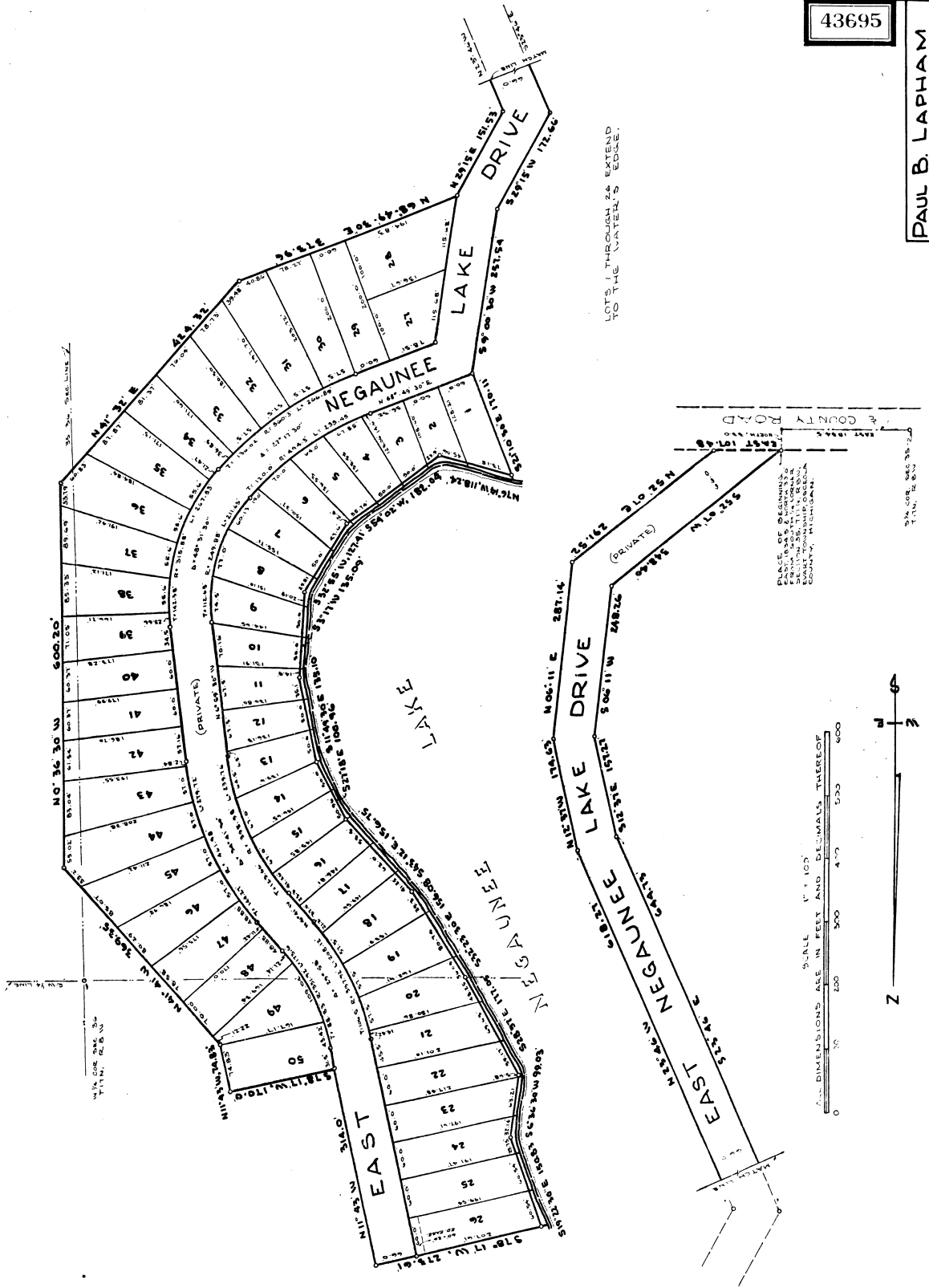


# NEGAUNEE LAKE SUBDIVISION No.1

Part of E 1/2 Section 35 and N.W. 1/4 Section 36, T17N,  
R8W, Evert Township, Osceola County, Michigan.



43695

PAUL B. LAPHAM  
REGISTERED SURVEYOR  
CLARE, MICHIGAN.  
Sheet 1 of 2

# NEGAUNEE LAKE SUBDIVISION No.1

Part of E 1/2 Section 35 and N.W. 1/4 S.W. 1/4 Section 36, T17N, R8W, Ewart Township, Osceola County, Michigan.

43695

### DEDICATION

KNOW ALL MEN BY THESE PRESENTS, That we, Russell W. McLaughlan, and Rhoda E. McLaughlan, his wife, as proprietors, and Elmer E. McLaughlan and Evelyn F. McLaughlan, his wife, and Archie L. McLaughlan and Dorothy L. McLaughlan, his wife, and Edward Morgan and Judith Ann Morgan, his wife, a partnership doing business as Negaunee Lake Farm, as contract purchasers, have caused the land described in the plat hereto attached, to be dedicated to the public use of the State of Michigan, to wit: as a public park, part of E1 Section 35 and N.W. 1/4 S.W. 1/4 Section 36, T. 17 N., R. 8 W., East Township, Osceola County, Michigan, and that the Drive, as shown on said plat, is hereby dedicated to the property owners of Sections 35 and 36, T. 17 N., R. 8 W.

### Proprietors

Russell W. McLaughlan  
Rhoda E. McLaughlan

### Contract Purchasers

Elmer E. McLaughlan  
Evelyn F. McLaughlan  
Archie L. McLaughlan  
Dorothy L. McLaughlan  
Edward Morgan  
Judith Ann Morgan

**JOHN N. QRR**  
WAYNE BINGAMAN

### Witnesses

Elmer E. McLaughlan  
Evelyn F. McLaughlan  
Archie L. McLaughlan  
Dorothy L. McLaughlan  
Edward Morgan  
Judith Ann Morgan

### STATE OF MICHIGAN

County of Osceola

On this 21st day of February, 1961,

before me, a Notary Public in and for said county, personally came the above named Russell W. McLaughlan and Rhoda E. McLaughlan, his wife, and Elmer E. McLaughlan and Evelyn F. McLaughlan, his wife, and Archie L. McLaughlan and Dorothy L. McLaughlan, his wife, and Edward Morgan and Judith Ann Morgan, his wife, known to me to be the persons who executed the above dedication and acknowledged the same to be their free act and deed.

My Commission expires \_\_\_\_\_

Notary Public, Osceola County, Michigan

STATE OF MICHIGAN

County of Osceola

On this 21st day of February, 1961,

before me, a Notary Public in and for said county, personally came the above named Elmer E. McLaughlan and Evelyn F. McLaughlan, his wife, and Archie L. McLaughlan, his wife, and Dorothy L. McLaughlan, his wife, and Edward Morgan and Judith Ann Morgan, his wife, known to me to be the persons who executed the above dedication and acknowledged the same to be their free act and deed.

My Commission expires \_\_\_\_\_

Notary Public, Osceola County, Michigan

### DESCRIPTION OF LAND PLATTED

The land embraced in the annexed plat of NEGAUNEE LAKE SUBDIVISION No. 1, Part of E1 Section 35 and N.W. 1/4 S.W. 1/4 Section 36, T. 17 N., R. 8 W., East Township, Osceola County, Michigan, contains 13.00 acres, more or less, and is described as follows: Beginning at the S.E. Corner of Section 35, T. 17 N., R. 8 W., East Township, Osceola County, Michigan; thence, East 107.48 feet; thence, N 80° 07' E, 251.52 feet; thence, N 06° 11' E, 287.14 feet; thence, N 82° 37' E, 174.53 feet; thence, N 23° 46' E, 618.27 feet; thence, N 29° 15' E, 151.33 feet; thence, N 69° 49' 30" E, 373.96 feet; thence, N 41° 35' E, 451.02 feet; thence, N 07° 26' 30" E, 600.20 feet; thence, N 42° 41' E, 109.35 feet; thence, N 11° 43' 30" E, 100.00 feet; thence, S 60° 25' 30" E, 150.83 feet; thence, S 85° 58' 30" E, 99.03 feet; thence, S 28° 37' E, 177.05 feet; thence, S 32° 30' E, 156.08 feet; thence, S 30° 17' E, 133.09 feet; thence, S 50° 55' E, 127.41 feet; thence, S 54° 02' E, 182.04 feet; thence, N 70° 14' E, 116.24 feet; thence, S 21° 10' 30" E, 170.11 feet; thence, S 90° 30' E, 237.54 feet; thence, S 29° 15' E, 100.00 feet; thence, S 60° 25' 30" E, 150.83 feet; thence, S 08° 11' E, 546.25 feet; thence, S 52° 07' E, 546.40 feet, east to the place of beginning, containing 50 numbered lots.

### CERTIFICATE OF MUNICIPAL APPROVAL

This plat was approved by the Township Board of the Township of Ewart at a meeting held on the 21st day of February, 1961, and that the width of lots is in compliance with requirements of Section 30, Act 172, of 1929, as amended.

Robert J. Hart, Township Clerk

### CERTIFICATE OF APPROVAL BY BOARD OF ROAD COMMISSIONERS

This plat has been examined and approved by the Osceola County Board of Road Commissioners on the 21st day of February, 1961.

John Bazim, Chairman  
John Bazim

### CERTIFICATE OF APPROVAL BY COUNTY BOARD

This plat was approved on the 21st day of February, 1961, by the Osceola County Plat Board.

Clerk: James E. Corbett  
John J. Roseff, County Clerk  
James E. Corbett  
James E. Corbett  
James E. Corbett, County Drain Commissioner

### COUNTY TREASURER'S CERTIFICATE RELATING TO TAXES

Office of County Treasurer  
Osceola County, Michigan

I hereby certify that there are no tax liens or titles held by the State on the lands described herein, and that there are no tax liens or titles held by individuals on said lands, for the five years preceding the 21st day of February, 1961, and that the taxes for said period of five years are paid, as shown by the records of the Osceola County Treasurer. This certificate does not apply to taxes, if any, now in the process of collection by township, city or village collecting officers.

James E. Corbett, County Treasurer

### SURVEYOR'S CERTIFICATE

I hereby certify that the plat heron delineated is a correct one and that permanent metal monuments consisting of iron pins, iron rods, iron pipes, or other suitable material, in the form of a cross, were placed at all angles in the boundaries of the land platted, at all the intersections of streets, and at the intersections of streets with the boundaries of the plat as shown on said plat.

Paul B. Lapham, Surveyor  
Paul B. Lapham, Registered Surveyor No. 9433

COPY

Plat recorded in the Register of Deeds for Osceola County, Michigan, on the 21st day of February, 1961.  
Plat recorded in the Register of Deeds for Osceola County, Michigan, on the 21st day of February, 1961.  
Plat recorded in the Register of Deeds for Osceola County, Michigan, on the 21st day of February, 1961.

Recorded in the Register of Deeds for Osceola County, Michigan, on the 21st day of February, 1961.

Recorded in the Register of Deeds for Osceola County, Michigan, on the 21st day of February, 1961.

Recorded in the Register of Deeds for Osceola County, Michigan, on the 21st day of February, 1961.

PAUL B. LAPHAM  
REGISTERED SURVEYOR  
CLARE, MICHIGAN.

Sheet 2 of 2