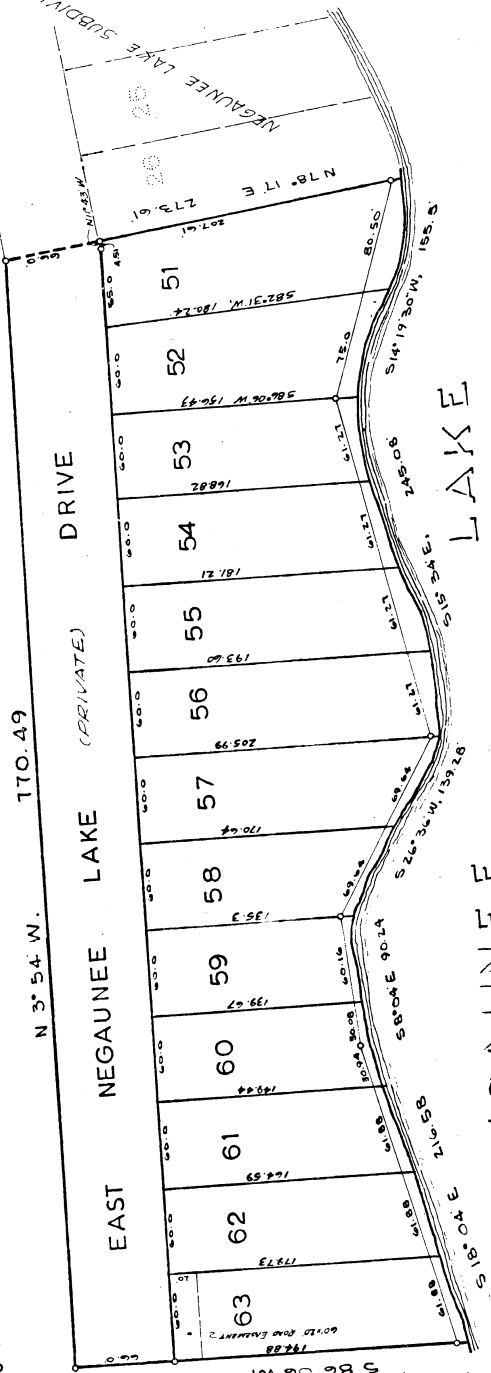
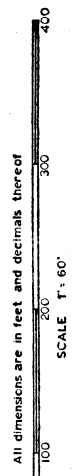


NEGAUNEE LAKE SUBDIVISION NO. 2

PART OF THE NORTHEAST ONE-QUARTER OF SECTION 35,
T 17 N, R 8 W, EVART TOWNSHIP, OSCEOLA COUNTY, MICHIGAN.

PLACE OF BEGINNING: 156.33 feet
N 77° 43' W 170.00 feet,
WEST, N 77° 43' W 170.00 feet,
N 11° 43' W 170.00 feet, from the
corner of Section 35, T 17 N, R 8 W,
Ewart Township, Osceola County,
Michigan.



170.49
N 3° 54' W.

DRIVE
(PRIVATE)

CERTIFICATE OF MERICIAL APPROVAL

This plat was approved by the Township Board of the Township of Ewart at a meeting held Sept 25, 1962 and the same was duly filed with the County Clerk at the County Office at Osceola, Michigan, on the 25th day of September, 1962, in accordance with the provisions of Act 172 of 1929, as amended.

Herbert Zeller
Twp. Clerk

CERTIFICATE OF APPROVAL BY BOARD OF COUNTY ROAD COMMISSIONERS

This plat has been examined and was approved on the 13th day of Sept, 1962 by the Osceola County Board of Road Commissioners.

John Bazarian Chairman
F.O. Lindell Member

CERTIFICATE OF APPROVAL BY COUNTY BOARD

This plat was approved on the 13th day of September, 1962 by the Osceola County Plat Board.

Ruth J. Noroof Clerk
James E. Rohrer Treasurer
James E. Rohrer Chairman

COUNTY TREASURER'S CERTIFICATE RELATING TO TAXES

I hereby certify that there are no tax liens or titles held by the State of the lands described hereon, and that there are no tax liens or titles held by individuals on said lands for the five years preceding the 13th day of September, 1962, and that the taxes for said period of five years are paid, as shown by the records of this office. These taxes do not apply to taxes, if any, now in the process of collection by township, city or village collecting officers.

James E. Rohrer
County Treasurer

SURVYOR'S CERTIFICATE

I hereby certify that the plat hereon delineated is a correct one and that permanent metal monuments consisting of bars not less than one-half inch in diameter and 36 inches in length, placed in concrete cylinders at least four inches in diameter and 36 inches in depth, have been placed at points marked thus (O) as shown on the plat, at all angles in the boundaries of the land platted, at all the intersections of streets and at the intersections of streets with the boundaries of the plat, as shown on said plat.

Paul B. Lapham
Registered Surveyor No. 9433

DEDICATION

KNOW ALL MEN BY THESE PRESENTS, That we, Russell E. McLaughlin and Rhoda E. McLaughlin, his wife, as deed holders, and I, Elmer E. McLaughlin, Attorney-in-fact (recorded in Osceola County Clerk's Office No.) for Neguness Lake Farm, a partnership between Elmer E. McLaughlin and Evelyn F. McLaughlin, his wife, and Archie L. McLaughlin, and Rhoda E. McLaughlin and Evelyn F. McLaughlin, his wife, and Archie L. McLaughlin and Dorothy L. McLaughlin, his wife, (Recorded in Osceola County Clerk's Office No.) as proprietors, have caused the land embraced in the annexed plat to be surveyed, laid out and divided into 13 lots, to be known as "NEGAUNEE LAKE SUBDIVISION NO. 2, Part of the Northeast one-quarter of Section 35, T 17 N, R 8 W, Ewart Township, Osceola County, Michigan", and that the Private Drive, as shown on said plat is hereby dedicated to the use of the property owners of said Section 35.

Signed:

Russell E. McLaughlin
Russell E. McLaughlin
Rhoda E. McLaughlin
Rhoda E. McLaughlin
Elmer E. McLaughlin
Elmer E. McLaughlin, Attorney-in-fact

STATE OF MICHIGAN

County of Osceola, State of Michigan, September 25, 1962, before me a Notary Public in and for said county, personally came the above named Russell E. McLaughlin and Rhoda E. McLaughlin, his wife, and Elmer E. McLaughlin, attorney-in-fact for Elmer E. McLaughlin and Evelyn F. McLaughlin, his wife, and Archie L. McLaughlin and Dorothy L. McLaughlin, his wife and Edward Morgan and Judith Ann Morgan, his wife, doing business as Neguness Lake Farm, known to me to be the persons who executed the above dedication and acknowledged the same to be their free act and deed.

My Commission expires July 23, 1963
Notary Public, Osceola County, Michigan

DESCRIPTION OF LAND PLATTED

The land embraced in the annexed plat of "NEGAUNEE LAKE SUBDIVISION NO. 2, Part of the Northeast one-quarter of Section 35, T 17 N, R 8 W, Ewart Township, Osceola County, Michigan," is described as follows: Beginning West, 120.94 feet, N 41° 41' W, 136.95 feet, N 11° 43' W, 74.83 feet, S 79° 17' W, 170.00 feet and N 11° 43' W, 314.0 feet from the East one-quarter corner of Section 35, T 17 N, R 8 W, Ewart Township, Osceola County, Michigan; thence, N 9° 54' W, 270.49 feet; thence, S 26° 06' W, 260.98 feet; thence, S 18° 04' W, 216.56 feet; thence, S 6° 04' W, 90.94 feet; thence, S 26° 06' W, 139.88 feet; thence, S 19° 34' W, 245.06 feet; thence, S 14° 19' 30" W, 155.5 feet; thence, N 79° 17' E, 273.61 feet, back to the place of beginning. Containing 13 numbered lots.